

Construction and Application Analysis of an Intelligent Distribution Network Identification System Based on Deep Neural Networks

Yu Ma^{1,*}

¹School of Information and Automation, Qilu University of Technology (Shandong Academy of Sciences), Jinan, 250353, China

Abstract

INTRODUCTION: At present, the communication between measuring data and network topology in the distribution system cannot be accurately established. Therefore, deep neural networks were utilized to learn the mapping relationship between the measurement data and network topology, achieving topology structure discrimination under different working conditions.

OBJECTIVES: This study aims to establish a machine learning-based Intelligent Distribution Network (IDN) online topology recognition model to address the limited measurement equipment in distribution networks and improve the accuracy and efficiency of network topology recognition.

METHODS First, light GBM was used for feature selection to reduce computational complexity and improve learning efficiency. Then, a DNN model was constructed for topological identification and enhances the model scalability through incremental and transfer learning mechanisms. In addition, the Cross-Validation Grid Search Algorithm (GSA) was used to optimize the hyperparameters to ensure that the model can achieve the optimal performance on different data sets. Finally, a new intelligent distribution network identification model (Intelligent Distribution Electricity Network Identification System, IDENIS) was constructed.

RESULTS: The study was experimentally verified on the distribution system of IEEE 33 and PG&E 69. The experimental results showed that the accuracy of the DNN-based model reached 0.9817 on the test set, while the accuracy after feature selection only decreased by 1.3%, and the features decreased by 81.8%. In the PG&E 69 node system, the features were reduced by 85.5%, while the identification accuracy was decreased by only 0.51%. These results demonstrated that the proposed method maintained high identification accuracy while reducing the computational resource consumption.

CONCLUSION: Its efficient computing speed fully meets the real-time requirements in practical applications. This paper provides new ideas and methods for achieving intelligent distribution network topology recognition of high proportion distributed power sources.

Keywords: Deep neural network; Online topology identification; Topological labels; Intelligent distribution network; Light GBM algorithm.

Received on 26 03 2024, accepted on 29 08 2024, published on 21 11 2024

Copyright © 2024 Yu Ma, licensed to EAI. This is an open access article distributed under the terms of the [CC BY-NC-SA 4.0](https://creativecommons.org/licenses/by-nc-sa/4.0/), which permits copying, redistributing, remixing, transformation, and building upon the material in any medium so long as the original work is properly cited.

doi: 10.4108/ew.5547

*Corresponding author. Email: mayu202401@126.com

1. Introduction

Electricity is currently the most widely used secondary energy source. However, its production still relies mainly on fossil fuel combustion. The development of smart grids has become a necessary path for the energy and power industry to improve the reliability and economy of the power grid to achieve large-scale access, consumption, and transmission of clean energy such as wind and electricity [1-2]. Deep Neural Network (DNN) is an effective machine learning method that can extract complex patterns from massive data and has strong adaptability and generalization ability [3-4]. DNN can excavate the nonlinear correlations between various operating states and influencing factors in distribution networks, providing important support for real-time identification of distribution networks [5-6]. The network topology of the distribution network may undergo dynamic changes due to factors such as equipment failures, maintenance work, and changes in energy demand. Network topology refers to the connections between the nodes and links in the network. Feature selection can not only reduce the computational complexity by reducing irrelevant or redundant features, but also improve the predictive performance and generalization ability of the model. Joint training is the simultaneous optimization of parameters for multiple related tasks or multiple models during training. The molecular features are used for automatic extraction and analysis. At present, it is impossible to accurately establish the correlation between measured data and network topology in most distribution network systems. In this study, DNN is used to learn the mapping relationship between measured data and network topology, realizing the topological structure identification under different working conditions. This experiment aims to provide new technical means for the operation and management of Intelligent Distribution Network (IDN) to further improve the operation efficiency and security of the power system.

The research mainly includes four parts. Firstly, an overview of the research background is provided, and a summary of the research in the relevant field is provided. Then, the establishment of an IDN identification system for DNN is elaborated. Secondly, experimental verification is conducted on the adaptive ability and other performance of the IDN identification system for DNN. Finally, a summary and outlook are provided for the entire study.

2. Related works

The distribution network topology identification system is an important tool for modern power operation and development. As the recognition framework of IDN develops and advances, more and more scholars are beginning to apply machine learning algorithms to various systems. DNN is also widely used in various fields.

Yin L et al. proposed a three-state energy consumer model to promote flexible scheduling of renewable energy. Then, an economic intelligent power generating controlling structure was designed to make the traditional multi-time

scale structure replaced. The economic intelligent power generation control allowed consumers of three states of energy to enter and exit freely, improving economic dispatch's efficiency. In addition, a scalable adaptive dynamic programming means was put forward. This adaptive dynamic programming could match the entry and exit characteristics of three state energy consumers and had fine algorithmic accuracy and computational speed, while making network redundancy in adaptive dynamic programming reduced [7]. Lee Rd et al. conducted a survey on delivering systems, using neural enhancing technology for achieving quick response time et al. This paper introduced some composition of the content transferring systems, emphasized difficulties, using neural enhancing models as countermeasures [8]. Yang A et al. developed a multitasking DNN for automatic extraction of molecular features and integrated tree like Long Short-Term Memory (LSTM) with multiple feedforward neural networks for correlation analysis of multiple features. Molecular features were encoded, calculated, and extracted in the molecular tree diagram without the need for manual user operation or preliminary molecular descriptor calculation. The proposed multi-task DNN was trained using both joint training and alternative training methods, which could capture the relevant information and commonalities between multiple target characteristics [9]. Alizadeh Bidgoli M et al. proposed a system for the energy management of microgrids. First, each microgrid used historical data to predict the load demand of users. Then, the cooperating game means was utilized to achieve microgrid's scheduling and energy trading. A predicting model called deep learning Artificial Neural Network (ANN) was established using ANN and rough neural water cycle algorithm to predict uncertain parameters [10]. Kumari P et al. proposed a new hybrid deep learning model, LSTM-CNN, for hourly global level radiation (Global Horizontal Irradiance, GHI) prediction. Spatiotemporal features were modeled by integrating LSTM and Convolutional Neural Network (CNN). First, the proposed hybrid model used LSTM to extract temporal features, and then used CNN to extract spatial features from the correlation matrices of multiple variables at the target and its adjacent locations [11].

Xu Z et al. proposed a recognition method using transferring terminal unit measurement results to ensure that the topology of the managing system was consistent with the actual topology of the distributing network. It expressed the topology recognition problem as a minimizing problem. Adding variables to unavailable phase angles in minimization problems could lead to nonlinearity and non-convexity. Asynchronous sampling time could lead to sampling errors when surveying power injection fluctuations [12]. Distribution network monitoring may improve service levels by reporting the cause of fault events and informing the nature of remedial measures. Jiang X et al. proposed a new structural similarity measure applied to relevant power quality waveforms, which inferred the cause of faults from substation current data using a very small amount of historical fault data. This method improved classification

accuracy compared with similar technologies [13]. Zhang W et al. proposed a fast error locating and isolating method for distributing networks. Three major techniques were introduced. They included a distribution network phase divider with permanent magnet operation structure, a phase selector based on transient current characteristics, and a temporary and permanent fault identification method based on power frequency voltage characteristics. These proposed strategies could avoid secondary impacts on upstream switches and power outages in upstream sections during permanent faults and shorten fault handling time [14]. Chen Y et al. proposed a fault localization method based on equivalent admittance distortion rate. The equivalent admittance distortion rate was obtained by measuring the equivalent admittance before and after the fault. A phase having the highest equivalent admittance distorting rate was treated as the faulty one. A feeder having the highest distorting rate was treated as the faulty one. A segment having the highest distorting rate was treated as the faulty one [15]. Dua G S et al. proposed a new method for detecting configurations by obtaining and processing real-time measurement values of optimized microwave measurement units. The placement of microwave measurement units was formulated based on many working configurations of this distributing network. Distribution network configuration recognition was solved by obtaining measurement data from nodes [16].

In summary, the identification of IDN occupies a core position in the operation of the power system. Traditional identification methods are mainly based on fixed mathematical models. Faced with the dynamic changes in the network topology of the distribution network, it is difficult for traditional identification methods to cope with the complexity and dynamism of the distribution network. This leads to the inability to accurately capture and establish the communication between measurement data and network topology in the distribution system. As deep learning technology develops, DNN has indicated significant advantages in handling nonlinear problems. Faced with topology discrimination problems under different operating conditions, DNN is used to explore the mapping relationship between measurement data and network topology. This is crucial for further research on IDN identification systems based on DNN.

3. DNN-based online topology identification system for distribution networks and grid searching algorithm for cross-validating

A machine learning-based IDN network topology recognition model is established based on these measurement and operational characteristics of the distributing network. The specific implementation steps are discussed in detail. Firstly, the data used in this experiment are analyzed. Second, an online identification method for network topology based on Light Gradient Boosting Machine-Gradient Boosting Decision Tree (Light GBM) is studied considering the limited measurement equipment in the distribution network.

3.1 DNN-based online topology identification system for distribution networks

Light GBM is an efficient and lightweight Gradient Boosting Decision Tree (GBDT). These two new data processing algorithms proposed in this study, GOSS and EFB, can significantly reduce computational complexity and improve learning efficiency while ensuring model accuracy. They are suitable for distributed power systems with massive and high feature dimensions, such as large distribution networks [17-18]. Light GBM, a histogram-based decision tree algorithm, is used to discretize continuous features into discrete histogram features, thus reducing the storage space and computational complexity of the data. This discretization approach can reduce the complexity of feature processing and enable better handling of high-dimensional sparse data. A sampling method called Gradient-based One-Side Sampling (GOSS) and a feature bundling method of Exclusive Feature Bundling (EFB) are used to make the model efficient and vertically parallelized computing when training. This speeds up the training of the model, which is especially effective when dealing with large-scale datasets. Conventional gradient lift tree algorithms are grown by layer. Light GBM uses a growth strategy called leaf-wise. The leaf-wise growth strategy selects the current optimal leaf node to split each time, which can find the direction where the loss function decreases fastest faster, thus accelerating the training of the model. On this basis, GOSS is proposed, which utilizes sampled data to model training without all samples. The second is based on mutually exclusive feature binding, which constrains multiple attributes to find the optimal solution, thus avoiding searching for each attribute separately. This method can greatly improve the model's learning effectiveness and make computing difficulty reduced while maintaining its accuracy. This study adopts machine learning methods to study the topology recognition of distribution networks from two aspects: offline learning and online application. Figure 1 is a topology identification framework based on machine learning.

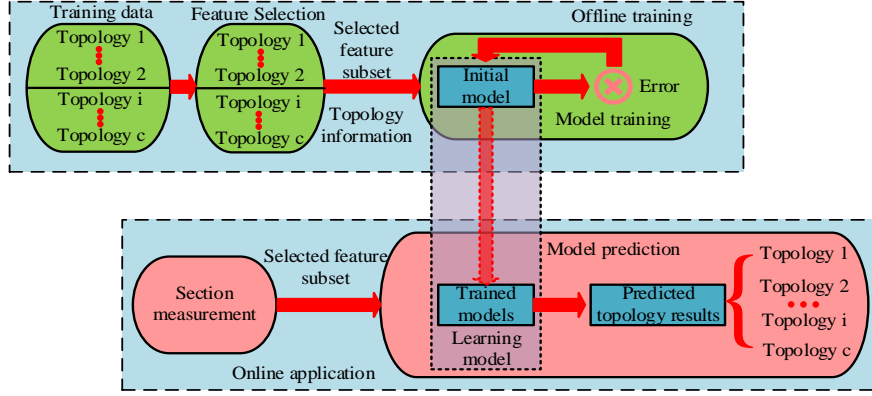


Figure 1. A topology identification framework based on machine learning

In Figure 1, the number of topologies for a given distribution network to function properly is determined. Various measuring devices are installed at certain key points. Each sampling point contains a set of time-domain measurement data for the operational variables, represented by colored solid lines to refer to the current network connectivity. In offline learning, a large amount of time-domain segmented measurement data with different topological structures are collected and used as training samples. On this basis, the original observation features are first selected for feature selection. The most efficient feature subset is selected. The corresponding topological structure is used as the output. On this basis, iterative optimization is carried out on the constructed model. In online applications, the cross-sectional measurement features under unknown topology are input into the trained model to obtain the corresponding network structure. The initialization of the gradient boosting decision tree algorithm is represented by formula (1).

$$f_0(x) = \arg \min_c \sum_{i=1}^N L(y_i, c) \quad (1)$$

In formula (1), $L(y_i, c)$ is the loss function. For $i = 1, 2, \dots, N$, the decision tree is represented by formula (2).

$$r_{mi} = -\left[\frac{\partial L(y_i, f(x_i))}{\partial f(x_i)}\right]_{f(x)=f_{m-1}(x)} \quad (2)$$

In formula (2), for $j = 1, 2, \dots, J$, the decision tree is represented by formula (3).

$$c_{mj} = \arg \min_{x_i \in R_{mj}} \sum L(y_i, f_{m-1}(x_i) + c) \quad (3)$$

In formula (3), the updated network structure is represented by formula (4).

$$f_m(x) = f_{m-1}(x) + \sum_{j=1}^J c_{mj} I(x \in R_{mj}) \quad (4)$$

The obtained regression tree is represented by formula (5).

$$\hat{f}(x) = f_M(x) = \sum_{m=1}^M \sum_{j=1}^J c_{mj} I(x \in R) \quad (5)$$

The output equation of ANN neurons is represented by formula (6).

$$y_j = f\left(\sum_{i=1}^n w_{ij} x_i + b_j\right) \quad (6)$$

Light GBM is used for feature selection. DNN is used for distribution network topology identification. Figure 2 shows the DNN structure.

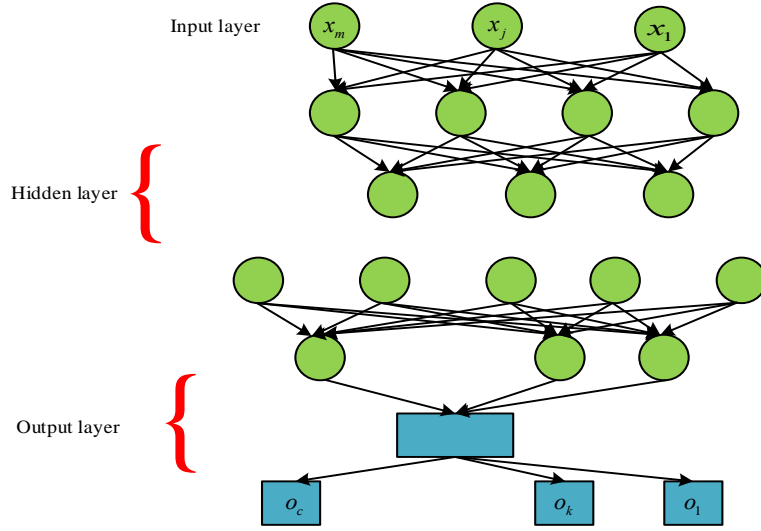


Figure 2. Schematic diagram of DNN structure

In Figure 2, the input feature values in the network are taken as the input parameters of the network. The number of network nodes is taken as the type of network structure. The ReLU function is chosen as the excitation function of the neural network to effectively solve the gradient vanishing and improve the computing efficiency of the algorithm. The output layer is activated using the standardized indicator function Softmax. For the input-output relationship in neural network learning, the i th hiding layer neuron's input is represented by formula (7).

$$net_i = \sum_{j=1}^M \omega_{ij} x_j + b_i \quad (7)$$

The i th hiding layer neuron's output is represented by formula (8).

$$o_i = \phi(net_i) = \phi(\omega_{ij} x_j + b_i) \quad (8)$$

The k th hiding layer neuron's input is represented by formula (9).

$$net_k = \sum_{i=1}^q \omega_{ki} y_i + a_k = \sum_{i=1}^q \omega_{ki} \phi\left(\sum_{j=1}^M \omega_k x_j + b_i\right) + a_k \quad (9)$$

The k th hiding layer neuron's output is represented by formula (10).

$$o_k = \psi(net_k) = \psi\left[\sum_{i=1}^q \omega_{ki} \phi\left(\sum_{j=1}^M \omega_k x_j + b_i\right) + a_k\right] \quad (10)$$

The adjusting direction of weight is represented by formula (11) as the negative gradient of the objective function.

$$\square \omega_{ij} = -\eta \frac{\partial L(E, O)}{\partial \omega_{ij}} \quad (11)$$

The updating rule is represented by formula (12).

$$\omega_{ij} \leftarrow -\omega_{ij} + \square \omega_{ij} \quad (12)$$

On this basis, the forward transmission signal and the backward transmission error are iterated repeatedly until the network parameters and loss function tend to a series of stable constants.

3.2 Cross-validation grid search algorithm

In machine learning, hyperparameter optimization is the process of setting an optimal set of hyperparameters. The hyperparameter optimization is used for controlling the algorithmic learning and adjusting other parameters [19-20]. The best hyperparameter tuple obtained can make the prior loss function minimized in known data, thereby obtaining the most accurate prediction results. When establishing DNN, the quantity of layers and neurons in the network is first determined. Other hyperparameters are then set to make the algorithmic learning controlled. The hyperparameters of the network can be obtained using a Grid Search Algorithm (GSA) based on cross-validating. Each parameter's value is determined, and a GSA parameter is used. Figure 3 is a schematic diagram of GSA.

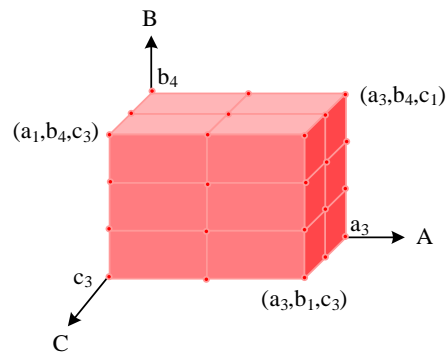


Figure 3. Schematic diagram of parameter grid searching

In Figure 3, each parameter’s potential discrete values are arranged and combined to construct a parameter grid. There are three possible values for parameter A, four possible values for parameter B, and three possible values

for parameter C. Therefore, there are a total of 36 parameter combinations for the parameter grid. For model performance evaluation, a 5-fold cross-validation method is used, and Figure 4 shows its principle.

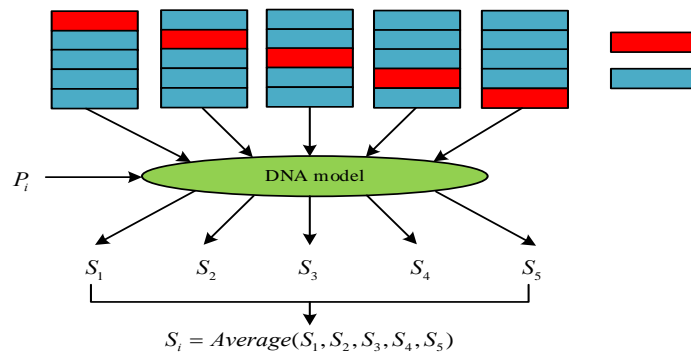


Figure 4. 5-fold cross-validation principle

In Figure 4, the dataset is randomly divided into 5 equal parts. One of the data is selected as the validation set without repetition each time. The remaining data are used as the training set, resulting in five pairs of datasets. The performance score of the learning model is obtained by using the allocated dataset for training and validation. The performance score of the parameter combination is the

average score of the five sets. A new method for identifying unknown topological structures is proposed. This method includes two aspects: first, utilizing the variance between samples for unknown topological identification, and second, incremental learning. Figure 5 shows a positional topology processing mechanism based on minimum variance.

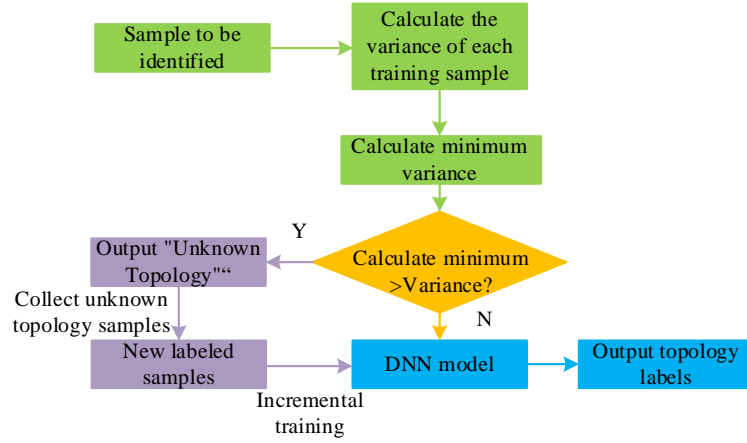


Figure 5. Flowchart of unknown topology processing mechanism based on minimum variance

In Figure 5, the identification samples and the variance of each training set are first calculated, followed by calculating the minimum variance and comparing them. When the sample variance $>$ the minimum variance, the sample corresponds to a certain topology in the training set and is identified with DNN. When the sample variance \leq the minimum variance, the sample corresponds to an unknown topology. Measurement samples are collected from unknown topology structures and annotated. Based on this, existing deep learning networks are learned to update the network topology structure. It is possible to promptly discover previously overlooked or newly generated network operating topologies by adopting the processing mechanism. The existing DNN is continuously revised and improved through an incremental learning mechanism, dynamically updating the topology knowledge base. This applies to IDNs with flexible and ever-changing topology and constantly emerging new operating scenarios. The minimum-maximum normalization method is selected for data standardization, and its transformation function is represented by formula (13).

$$\hat{f}_i = \frac{f_i - f_i^{\min}}{f_i^{\max} - f_i^{\min}} \quad (13)$$

In formula (13), f_i^{\max} and f_i^{\min} refer to feature points' maximum and minimum values, respectively. f_i is the feature's initial value. \hat{f}_i is the standard characteristic value. The definition of DNN is represented by formula (14).

$$\sigma(z)_j = \frac{e^{z_j}}{\sum_{k=1}^K e^{z_k}} \quad (14)$$

The cross entropy in DNN is represented by formula (15).

$$H(p, q) = -\sum_x p(x) \log q(x) \quad (15)$$

In formula (15), p is the probability distribution. q is the actual output. The research introduces the incremental learning based on the semi-supervised paradigm to increase the scalability of the IDN topology identification system based on DNN. This mechanism allows the model to learn and adapt to new network topologies in real-time at runtime by utilizing partially labeled data in the form of pseudo supervision. In addition, transfer learning is used to pre-train models on similar but smaller networks and reuse these pre-trained knowledge to initialize model training on larger and more complex networks. The knowledge learned from an environment is used to help with the learning tasks in a new environment. This improves the training efficiency and convergence speed of the model on the new network. Meanwhile, the adaptability of the model is enhanced to the identification accuracy of the new network topology, thus further enhancing the scalability and practicability of the system. Besides, the model is integrated into the existing power system management infrastructure. Then, it is necessary to develop the development data universal interface to ensure that the model can receive and process the measurement data from the existing system. Finally, an IDENIS model that combines Light GBM, DNN, and GSA is constructed. Light GBM is responsible for feature selection. The improved DNN is responsible for the topological recognition model. GSA is used to optimize the hyperparameters of DNN.

The performance of the model may be affected under conditions of imbalanced data. If certain topological structures are not adequately represented in the training set, the model may have difficulty accurately identifying these minority categories, leading to a decrease in classification performance. To address these issues, research is conducted to increase the cost of minority class classification errors and to achieve a balance of data during training by discarding some majority class samples. The parameter

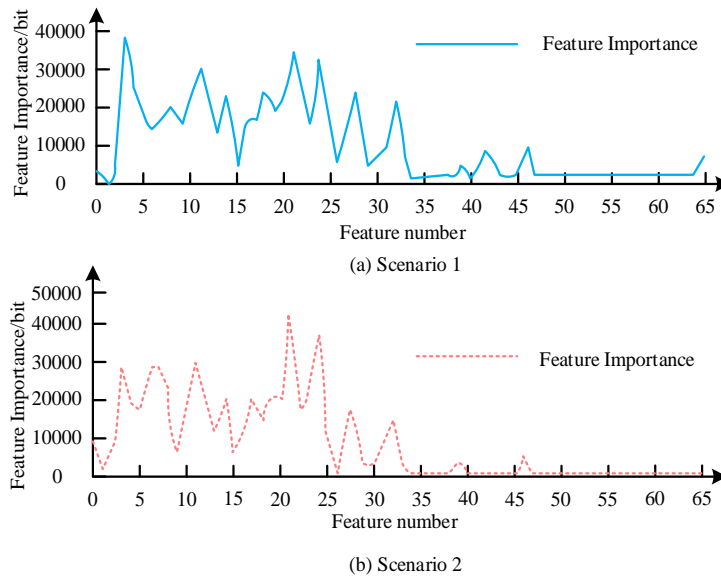


Figure 6. IEEE33 node system characteristic importance

Figure 6 shows the importance analysis of the characteristics of the IEEE33 node system. 0 to 32 are voltage amplitude characteristics. 33 to 65 are active characteristics. The importance of each function varied greatly. Features with low importance had little impact on structural recognition and could be excluded in structural recognition. Overall, the importance of voltage amplitude characteristics was much greater than active power, indicating that topology identification using node voltage amplitude was more effective. This conclusion was consistent with the physical mechanisms of voltage and power distribution at various nodes in the power grid. However, no matter how the topology of the distribution system changed, the power of a node was determined by the

load it was connected to. The power of a node was not affected by the wiring mode, making it difficult to truly reflect the topology characteristics of the network. The study compared it with some other common machine learning algorithms to verify the advantages of DNN. Each algorithm was optimized using a GSA that had undergone cross-validation in the corresponding scenario. Starting from all features, these features were reduced in order of importance to obtain the corresponding subset of features to observe the relationship between the quantity of selected features and the accuracy. Then, the learned model was trained separately. Figure 7 shows the communication between the quantity of features and the accuracy of the test set.

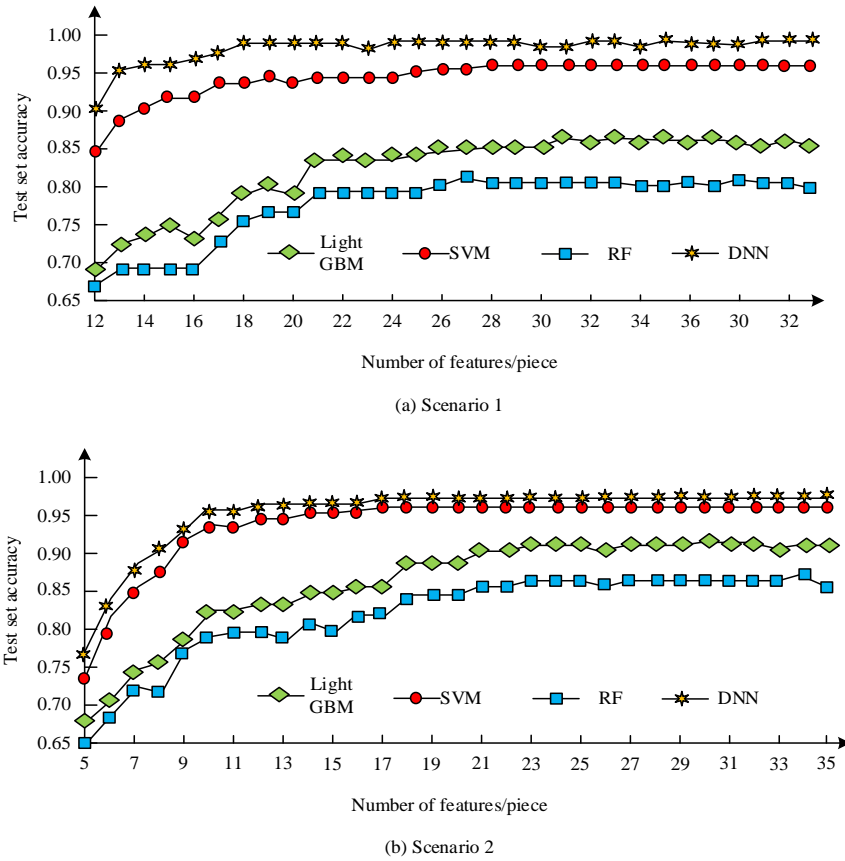


Figure 7. The relationship between the accuracy of four learning algorithm test sets and the number of features

In Figure 7, as the features decreased, the accuracy of test cases showed a decreasing trend. These experiments confirmed that DNN-based models had the largest training samples and the best topology recognition ability. All four training methods could meet the needs of online applications. In Figure 7 (a), the accuracy of the test set reached 0.9817. After the features exceeded 16, the accuracy of the test samples remained stable. However, when the features were less than 16, the accuracy of the test samples dropped sharply. In Figure 7 (b), compared with the original feature set, the extracted feature subset required 81.8% less features, while the recognition accuracy only decreased by 1.3%, reaching 0.9724. Compared with Support Vector Machine (SVM), this algorithm improved accuracy by 1.6% when the

number of features was large. When the number of features was small, it decreased by about 3.6%.

4.2 Feature selection results and comparative analysis based on Light GBM in PG&E 69 node distribution system

Under supervised learning, the gradient descent method was used to minimize the model error and optimize the parameters of the neural network. In each iteration of the loop, the loss function of each loop changes in a gradient manner, thereby controlling the learning rate in Figure 8.

network-based IDN network topology recognition algorithm was proposed in this study. The proposed algorithm was experimentally validated using the IEEE33 node system. Its adaptive ability was studied under different noise levels and missing measurement data conditions. These experiments confirmed that the proposed method could identify the real-time topology of the distributing network only by measuring the instantaneous cross-section of local nodes. Its computational speed was fast and could meet the real-time requirements. Compared to SVM, DNN had an accuracy increase of about 1.1% when there were more features, and about 2.4% when there were fewer features. However, this method still has some shortcomings, such as the high cost of manually annotating the data used in research. On this basis, future work will delve into how to achieve automatic topology labeling of measurement data, thereby improving the adaptability and promotion ability of topology recognition. Future methods can automatically annotate measured data to reduce the cost of manual annotation and further optimize the feature set.

References

- [1] Moise I M, Meltzer V, Pincu E. A study on pellets as an alternative source of energy for fossil fuel using adiabatic combustion calorimetry. *Revue Roumaine de Chimie*, 2020, 65(2):211-215.
- [2] Hua W, Chen Y, Qadrdan M, Jang J, Sun H, Wu J. Applications of blockchain and artificial intelligence technologies for enabling prosumers in smart grids: A review. *Renewable & Sustainable Energy Reviews*, 2022, 161(6):112308-112320.
- [3] Fan D, Ren Y, Feng Q, Liu Y, Wang Z, Lin J. Restoration of smart grids: Current status, challenges, and opportunities. *Renewable and Sustainable Energy Reviews*, 2021, 143(5):110909-110925.
- [4] Wang K, Mao W, Song H, Evinemi E I. A multi-data training method for a deep neural network to improve the separation effect of simultaneous-source data. *Geophysical Prospecting*, 2023, 71(1):63-84.
- [5] Chen Y H, Lin W T, Liu C W. Image recognition of interference fringes in polishing by convolutional neural network with data augmentation by deep convolutional generative adversarial network. *Optical Engineering*, 2022, 61(4):102-114.
- [6] Lee S H, Yu W F, Yang C S. ILBPSDNet: Based on improved local binary pattern shallow deep convolutional neural network for character recognition. *IET image processing*, 2022, 16(3):669-680.
- [7] Yin L, Luo S, Ma C. Expandable depth and width adaptive dynamic programming for economic smart generation control of smart grids. *Energy*, 2021, 232(3):120964-120936.
- [8] Lee R, Venieris S I, Lane N D. Deep Neural Network-based Enhancement for Image and Video Streaming Systems: A Survey and Future Directions. *ACM computing surveys*, 2022, 54(8):169-198.
- [9] Yang A, Su Y, Wang Z, Jin S, Ren J, Zhang X, Shen W, Clark J H. A multi-task deep learning neural network for predicting flammability-related properties from molecular structures. *Green Chemistry*, 2021, 23(12):4451-4465.
- [10] Alizadeh Bidgoli M, Ahmadian A. Multi-stage optimal scheduling of multi-microgrids using deep-learning artificial neural network and cooperative game approach. *Energy*, 2022, 239(6):122036-122050.
- [11] Kumari P, Toshniwal D. Long short term memory-convolutional neural network based deep hybrid approach for solar irradiance forecasting. *Applied Energy*, 2021, 295(8):117061-117081.
- [12] Xu Z, Jiang W, Xu J, Wang D, Wang Y, Ou Z. Distribution Network Topology Identification Using Asynchronous Transformer Monitoring Data. *IEEE Transactions on Industry Applications*, 2023, 59(1):323-331.
- [13] Jiang X, Stephen B, Mcarthure S. Automated Distribution Network Fault Cause Identification With Advanced Similarity Metrics. *IEEE Transactions on Power Delivery*, 2021, 36(2):785-793.
- [14] Zhang W, Chang Z, Zhang C, Song G, Tan W. A quick fault location and isolation method for distribution network based on adaptive reclosing. *IET Generation, Transmission & Distribution*, 2022, 16(4):715-723.
- [15] Chen Y, Yin J, Li Z, Wei R. Location for single-phase grounding fault in distribution network based on equivalent admittance distortion rate. *IET Generation, Transmission & Distribution*, 2021, 15(11):1716-1729.
- [16] Dua G S, Tyagi B, Kumar V. A Novel Approach for Configuration Identification of Distribution Network Utilizing μ PMU Data. *IEEE Transactions on Industry Applications*, 2021, 57(1):857-868.
- [17] Tiwari D, Bhati B S, Nagpal B, Sankhwar S, AI-Turjman F. An enhanced intelligent model: To protect marine IoT sensor environment using ensemble machine learning approach. *Ocean engineering*, 2021, 242(11):110180-110190.
- [18] Kunzweiler F, Biltzinger B, Greiner J, Burgess J M. Automatic detection of long-duration transients in Fermi-GBM data. *Astronomy and astrophysics*, 2022, 665(3):22-31.
- [19] Du X, Xu H, Zhu F. Understanding the Effect of Hyperparameter Optimization on Machine Learning Models for Structure Design Problems. *Computer-Aided Design*, 2021, 135(5):103013-103028.
- [20] Mokayed H, Quan T Z, Alkhaled L, Sivakumar V. Real-time human detection and counting system using deep learning computer vision techniques. *Artificial Intelligence and Applications*. 2023, 1(4): 221-229.