

Hahslm Heart Electrocardiogram

Roikhan Mochamad Aziz

{ hahslm472319@gmail.com }

UIN Syarif Hidayatullah

Abstract. There are various aspects of human life in the medical field about the heart such as the circulatory system of heart and heart rate machine with religiosity factor. This research aims to analysis about relation among medical in human body, circular system of heart and religiosity of heart. Data gets from various sources books, journals, internet, primary data, and secondary data also from holy book. Primary data gets from electrocardiogram (ECG) with the rate of heart. Methodology used in this study is approach of hahslm with main variables from religiosity aspects and internal external factors of medical. The methods are similarity and reflexivity. Similarity between ECG and form of hahslm. Reflexivity in the main variables of heart rate. The results are human heart always praises to Allah and the graph of heart rate in ECG shows the symbols of sequence of prayers order. Heart praises to God with sentence of Glorious, Merciful, Sustain, and Cycle.

Keywords: hahslm, heart, praise, Islam, ecg

1. Introduction

The advancement of medical science today seems to have forgotten the contribution of religious texts, which is the Qur'an and the Hadith. As we know, progress in the 20th century alone has resulted in a large literature and understanding in anatomy, drug health, and the correlation between the two.

In accordance with the times, each generation has a higher level of civilization compared to the previous generation. At each level of human civilization, there are only natural secrets that open the veil. This is because human nature itself is always curious and continue to think to seek answers to various things that exist in this world. But on the other hand, there is also an undeniable fact that there is a destiny there that belongs to the creator of nature, and becomes the secret of the power that determines the time, when it is time to unfold the secret of the creation of the universe for the benefit of man.

Humanity in accordance with the level of civilization in every decade has an increasingly good ability to unveil the secret of the existence of the entire universe in this universe. The more open the veil, the more the world is amazed at the Islamic message. Because so many

secrets are perfectly summarized by the message of Islam in the revelation of Allah SWT, Al-qur'an and in the words and actions of the Prophet Muhammad, and as Sunnah.

The essay must be a benchmark in human life. Because it is a guide for man, then the content of the treatise is the way of human life according to his nature. These guidelines can be reached by humans if humans are indeed berifikir and trying to find the truth. The Islamic treatise sourced from the Qur'an will be preserved by Allah SWT forever, along with his word:

إِنَّا نَحْنُ نَزَّلْنَا الذِّكْرَ وَإِنَّا لَهُ لَحَافِظُونَ

"It is We who sent down the Qur'an and indeed, We really take care of it". (QS. Al-Hijr [15]: 9).

Islamic treatise is a treatise that stands on the objective reality of man with the nature possessed by man. Therefore humans are required to have the ability to reveal the wisdom of Islamic treatises contained in the Qur'an or as-Sunnah.

It is clear that the Qur'an and hadith are the guidance of man. In it, there are clues about various aspects of human life, including the medical field, especially about the heart, the circulatory system, the circulatory system and many other things, which will be a special discussion on this paper. In the Qur'an and hadith we can find accurate depictions of anatomical structure, physiology, medicine, prevention, and spiritual health . (Fadhil & Effendi .: 2016).

There are some objections in this research to have the result of integration between Islam and science.

a. Problem Formulation

What is the relationship between heart and Islam in Electrocardiogram om Hahslm theory ?

b. Purpose

To analyze the relationship between heart and Islam in Electrocardiogram on Hahslm theory.

c. Benefits

Able to be a reference for Lecturers, Students, and academics who will conduct research about Heart and Religion to have integration between science and Islam based on muslim methodology.

2. Theoretical Basis

A. Islam kaffah

Islam rahmatan lil alamin is an integral part or a core part in the living system that exists in man, in the environment, and the universe which means that all life begins from the concept of Islam kaffah. In other words, the earliest creation process was Islam. (Fadhil & Effendi .: 2016).

Islam Kaffah, which has been comprehensive in all its aspects, is Islam that has been accepted by the Companions directly from Rasulullah SAW and they amalkan under the supervision of SAW, even direct divine praise. If something is not right or wrong, then down verse reminds of an event, or down verses again detailing the problem. The direct supervision of the seventh heaven, ie the direct supervision of Allah SWT which decreases this shari'ah. Therefore, the Prophet sallallaahu 'alaihi wa sallam said: "The best of generations is the generation in which I am there." What does it mean best in what way? In all matters of religion, morality is the best of the Sahaba, his faith is also the best. Worship, both the quality level and the quantity level, the shahabat are the best. Because the Messenger of Allaah (peace and blessings of Allaah be upon him) firmly declares that the generation is the generation where I am. (Anonymous: 2010).

According to the theory developed by Aziz (2016) on the theory of Hahslm about development of epistemology in the research of a comprehensive system with approach method according to Arabic rule that is to see the word Islam in basic word format consisting of 3 consonant letter, that is: Sin, lam, mim. It is then formulated in the function of an Islamic formula called H theory, always based on its basic philosophy, consisting of ontology in Islam, epistemology in kaffah, and its axiomatic patterned stance in the form of warning and kindness, so it is stated that the emergence of Islam, forming the concept of kaffah, Which is done through warning and kindness. (Fadhil & Effendi .: 2016) This is in accordance with the contents of the Qur'an which reads "silmi kaffah" with the word "silmi" which is a derivation of the letters sin lam mim. (Roisah: 2013).

The formulation of the three basic philosophical elements of Islam is in sync with the approach that produces the H theory which is the elaboration of the basic word of Islam itself (Aziz, 2016). Islamic scholarship must have a foundation of thought, as a theory to be implemented in the field in accordance with the progress of science at this time. It takes synchronization between the theory derived from the Quran with the practices that occur in the simulation and modern technology, so it takes a corridor of a big concept of the basic science of Islam itself. Islamic science comes from monotheism and stops at monotheism as well. (Zainuddin: 2017)

B. Ontology

The Islamic ontology is monism, meaning that God is the origin of all things, the One and there are no allies to Him, while all of His creations are dualism and pluralism. (Zainuddin: 2017).

Each whole concept must have a consistent rationale. In general knowledge a concept that is always consistent in its true will become a universal form which is understood as the basic value which will be possessed by another form.

Ontologically all creation or creation or universe is a system and the basic system is called Islam. Based on this system, the sub systems present in the universe will be consistent with the basic system. Throughout the elements of the system

Surah Al-Imran [3]: 19 :

إِنَّ الدِّينَ عِنْدَ اللَّهِ الْإِسْلَامُ

"Indeed Din Allah is Islam" (QS. Al Imran [3]: 19)

C. Epistemology

Epistemology is a study of science that is very popular and become the most interesting thing. Simply Epistemology is a subject that examines the knowledge and its relation to the essential truth. Epistemology becomes an interesting discussion when it is associated with divinity because the ultimate truth will only be possessed by god, therefore the essence of the ultimate truth that is subject to Epistemology becomes impossible to obtain by the thought and taste of man as a creature of God. (Dahlan: 2014).

Islamic epistemology is eclectic, not only rational, empirical, but also intuitive and based on revelation as the first and main source. (Zainuddin: 2017) Islam is interpreted as a holistic system, comprehensive or wholly. Then it is the whole Islam that becomes epistemology and is called as the kaffah concept of Islam. . (Fadhil & Effendi .: 2016)

Surah Al-Baqarah [2] 208 :

يَا أَيُّهَا الَّذِينَ آمَنُوا ادْخُلُوا فِي السِّلْمِ كَافَّةً

"O ye who believe! Enter into Islam you kaffah (complete)." (QS. Al-Baqarah [2]: 208).

D. Axiology

The axiom aspect of philosophy discusses the values or morals prevailing in human life. (Kayung: 2011) Previously there was a discussion of ontology which means Islam and then epistemology as the kaffah of an existing system and the axiology of the simple implementation of the two previous elements ie Ontology and epistemology.

In this axiology, there are always two relationships between horizontal and vertical structures. The emergence of Islam, forming the concept of Kaffah, which has two sides side by side in nature (Fadhil & Effendi .: 2016) These two things are analogized as different things like men and women, light and dark. As per QS. Yasin [36]: 36 which states 2 things:

سُبْحَانَ الَّذِي خَلَقَ الْأَزْوَاجَ كُلَّهَا مِمَّا تُنْبِتُ الْأَرْضُ وَمِنْ أَنْفُسِهِمْ
وَمِمَّا لَا يَعْلَمُونَ

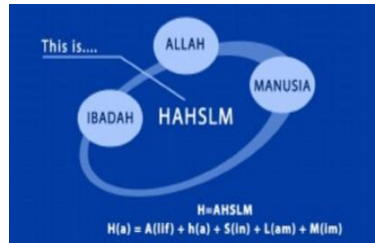
3. RESEARCH METHODOLOGY

A. Hahslm Method

The Hahslm method is a genuine method of Islam because Derived from Quran Surah Al-Hijr (15): 87

وَلَقَدْ آتَيْنَاكَ سَبْعًا مِنَ الْمَتَانِي وَالْقُرْآنَ الْعَظِيمَ

"And we have given you seven verses over and over and the great Qur'an." (QS. Al-Hijr [15]: 87)



Formula:

H = a.h (s.l.m)

Where: H = Huda (Hint)

A = Alif (Road)

H = Hanif (Straight)

S = Sin (Human)

L = lilah (God)

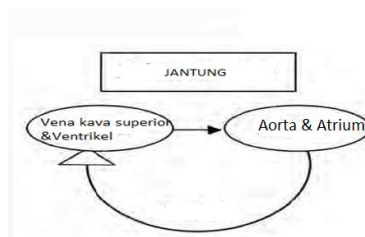
M = Mosque (Worship)

4. DISCUSSION

A. Heart And Islam

There is diagram with heart variable to explain that it turns out the heart has the same concept with the concept of Hahslm theory. If on the theory Hahslm depicted that Man (sin) was created by Allah SWT (lam) to worship him (mim)

Diagram Heart Thinking

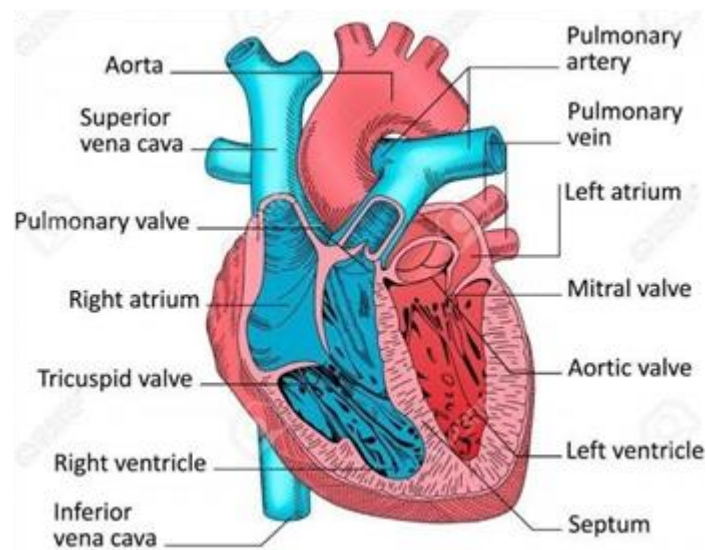


Source: Analysis 2018

Other diagram explains the function of the heart. The heart as the core organ of the human is denoted as (lam) instructions. Because the function of the heart itself is very important that is to pump blood. Then in the heart there is a section called Aorta. This aorta serves to carry

blood containing oxygen. This aorta is represented as (sin) because it functions as a blood-carrying carrier containing oxygen to some other parts of the heart such as the lungs, left ventricle and the right chamber before passing through the body. For the atrium itself is usually referred to as a porch, where there are two parts of the left porch and the right porch. The function of the left foyer brings blood to the left ventricle or also called the left ventricle and the right porch serves to carry oxygen-rich blood to the right ventricle or also called the right chamber. Then the last one on the heart is the superior vena cava & ventricles. These two parts are in the same place, which is located on the left side of the heart that serves to receive blood flow from the aorta earlier. This part of the ventricle is also called the cubicle. This chamber was divided into two parts namely the left chamber and the right chamber. The function of each room is different. The right chamber serves blood from the right atrium (the right side) and then spreads to the lungs, then the left ventricle receives blood from the left atrium (left portico) and carries it throughout the body. Then after the left ventricle to flow throughout the body, this is where the superior vena cava function is to bring blood that contains carbon dioxide back into the heart, so that the heart can receive blood intake and continue in the pump again as in the picture above. Thus the superior vena cava and Ventricle are represented as (mim).

Diagram Heart Anatomy



Source: Conny M. A. 1993.

In the picture above, the authors explain that the flow of the human circulatory system at the core of the heart line Hahslm concept. Here the author is able to describe the heart as the central core of the human organs, where the blood is in the heart (lam) in the pump / channeled to the right called aorta (sin), where this aorta actually has a primary function to direct blood flow to the whole Body, but before that, flowed first goto the left atrium (left porch). The main function of the left porch is to receive the blood that is rich in oxygen and then redirected back to the left ventricle (left chamber). After the left chamber receives blood

from the left foyer is the main function of the left chamber to drain the blood throughout the body or commonly called With "big blood circulation". However, there are several blood streams flowing into the Vava Superior (VKS) section, where the function of this VKF redirects blood to the heart.

Then for the right atrium (right porch) serves to receive blood rich in carbon dioxide and then circulated to the right ventricle (right ventricle). Then this is where the function of the right ventricle (right ventricle) is to drain the blood to the lungs or commonly called the "small blood circulation". Such is the description of the analysis of the picture above, that the blood circulation in the human heart has been in a very neat and structured arrangement. It all happened Because of the power of Allah SWT. In accordance with the concept of Hahslm, our heart is able to function optimally with the aim that we are able to perform daily life activities, and most importantly we are created by Allah Swt to worship Him.

Diagram Heart Praise



Source: Aziz, 2019

According to the chart that is observed in the ECG monitor, each heartbeat can be divided into three (3) phases. The first phase, is a range of preparation of the heart for pulsing. In this initial phase, blood flow is headed towards the heart and almost flow in the heart. In this first phase, it has been seen the signs of a heart a right under pressure the presence of the initial pressure although light but fast sequential. The analogy of this blood flow to the heart is like a basketball that is dribbled with resulting in a graph of up and down thick and fast. As a result of the ball being reflected to the floor by hand.

The shape of the graph up and down, thick and many of these as well as signs of arrival a massive tsunami or signs of a large earthquake. In accordance with the methodology of similarity, graphic patterns of up and down or thick and many resembles the letter S or the letter Sin in Hijiyah or approaching number 3 (three) that means plural or many in Arabic structure. This interpretation of thick and many is compassionate and fostered, because groups of small but and many are more closely served with words of compassion and foster care. In religious terminology, referred to as the Glorious and Merciful whereas according to the Asmau Husna that is known as Ar-Rahman Ar-Rahim.

The second phase, it means occured of heartbeat. The highest pressure occurs in comparison with another phase. The ECG graph showing the vertical line, up to the extreme high and low indicating blood flow that was flow the heart. The shape of high and low in this graph can be analogous to basketball that is connected to the top to be able to pass the opponent then enter the ring. In accordance with the methodology of similarity, this high graphic pattern resembles the letter L or Lam in Hijaiyah in the Arabic structure. Interpretation of the heart praise in this

second phase is the heart does prayer movement know as rukuk that is long with a recitation of the Al-Azhim is defined as long, tall or summarized into words sustain or become phrases Supreme Sustain.

Phase-3, is a continuation of the main heart rate, so that it can be categorized as residual pressure results or result of cardiac stress. The graph on the ECG shows a line which is curved in a medium, not too big convex, nor too small concave. This semicircular shape showing the flow of blood which is leaving the heart. This curved shape can be analogous to basketball that is reflected back after the occurrence of high ball before. In accordance with the methodology of similarity, the semicircular lines resemble the letter M or Mim in Hijayah on the structure of Arabic. The interpretation of the heart in the 3rd phase is that the heart is performing the prayer movement which is prostration that is curved with the reading of Al-A'la. As bound as the circular or the Supreme Cycle.

5. CLOSING

A. Conclusion

The heart is the most vital human organ, because with heart, human is able to live in daily activities. In harmony with the Islamic religion, the heart is the organ that first formed, which serves to pump blood and drain it throughout the body, as well as the existence of Islamic religion. Islam is the religion that was first established since the first time of human being created and sent down to earth.

From the 1,2,3 phase when the heart is beating from the ECG device a graph of heart pressure is displayed with the interpretation that the heart glorifies by performing prayer movements in the form of horizontal lines (S), vertical (L), and diagonal (M) which is interpreted by reading Ar- Rahman Ar-Rahim, Al-Azhim, Al-A'la.

So the heart is the most important organ and must be maintained by every human being to stay in a healthy and stable condition, as well as with Islam. Islam is the spiritual heart for Muslims that we should keep and always be used as a guide for life, in order to get physical and mental happiness.

References

- [1] Al-Qur'an dan terjemahan www.google.com di akses pada 31 maret 2017
- [2] Anonim, (2016) "Sistem kerja dan fungsi jantung yang sehat" artikel ini di akses pada 31 maret 2017 dari <http://www.alodokter.com/sistem-kerja-dan-fungsi-jantung-yang-sehat>
- [3] Anonim, (2010) "Memahami dan Mengamalkan Islam Secara Kaffah Sesuai Tuntunan Rasulullah" artikel ini di akses pada 31 maret 2017 dari http://www.assunnah.mobie.in/artikel/islam_kaffah
- [4] Anonim, (2011) "Pengertian aksiologi dan aspek-aspek serta isu aksiologi" artikel ini di akses pada 31 maret 2017 dari <https://dedikayunk.wordpress.com/2014/11/19/pengertian-aksiologi-dan-aspek-aspek-serta-isu-aksiologi/>
- [5] Anonim, (2013) "Pengertian jantung dan fungsinya pada manusia" artikel ini di akses pada 31 maret 31 maret 2017 dari <http://www.dosenpendidikan.com/pengertian-jantung-dan-fungsinya-pada-manusia/>
- [6] Aziz, Roikhan Mochamad. (2010) "New Paradigma in On sinlamim Kaffah In Islamic Economics", Jurnal Signifikan, Vol. 9, No. 2, Mei-Agustus, Jakarta,. <Http://www.uinjkt.ac.id>
- [7] Conny M. A. van Ravenswaaij-Arts, MD; Louis A. A. Kollee, MD, PhD; Jeroen C. W. Hopman, MSc; Gerard B. A. Stoeltinga, MD, PhD; Herman P. van Geijn, MD, PhD. 2003. Heart Rate Variability. *Ann Intern Med.* 1993;118(6):436-447. C. M. A. van Ravenswaaij-Arts, MD, Department of Pediatrics, University Hospital, HB Nijmegen, The Netherlands.
- [8] Dahlan, Ahmad, (2014) "Hakikat dan pengertian epistemology dalam kajian filsafat ilmu", artikel ini di akses pada 31 maret 2017 dari <http://www.ahmaddahlan.net/2015/10/hakikat-dan-pengertian-epistemologi-dan-Epistimologi-filsafat-ilmu.html>
- [9] Fenton. Flavio H & Elizabeth M. (2012), "Heart Structure, Function and Arrhythmias" Department of Biomedical Sciences, College of Veterinary Medicine, Cornell University, Ithaca, NY
- [10] Roisah,(2012), "Teori konsumsi Hahslm" artikel ini di akses pada 31 maret 2017 dari <https://iespuinjkt2012.wordpress.com/>
- [11] Sasrawan, Hedi, (2015) "12 bagian jantung manusia beserta fungsinya" artikel ini di akses pada 31 maret 2017 dari <http://hedisasrawan.blogspot.co.id/2015/07/12-bagian-bagian-jantung-manusia.html?m=1>
- [12] Zainuddin, Muhammad, "Paradigma keilmuan islam" artikel ini di akses pada 31 maret 2017 dari <http://zainuddin.lecturer.uin-malang.ac.id/2013/11/13/paradigma-keilmuan-islam-2/>