

Lidwa Pusaka Application in Learning Hadith

1st Dadah¹, 2nd Casram¹, 3rd Ecep Ismail¹
{ddah9440@gmail.com¹}

UIN Sunan Gunung Djati, Faculty of Ushuluddin, Bandung, West Java, Indonesia¹

Abstract. This study focuses on Lidwa Pusaka application in learning and teaching ḥadīth. Lidwa Pusaka or Lembaga Ilmu dan Da'wah serta Publikasi Sarana Keagamaan, The Institute of Islamic Science, Da'wa and Publication of Religious Facilities, is Indonesian computational application of ḥadīth that initiated by Indonesian students who studied in the Middle East. The application uses 62,000 ḥadīths that taken from nine books of ḥadīth collections (kutub al-tis'ah). It can be used to search the meaning of ḥadīth and its transmission. This study use the Lidwa Pusaka application in teaching ḥadīth among students of Hadīth Department at UIN Sunan Gunung Djati Bandung, using learning media approach. It is a study that analyze the relationship of two variables and then simultaneously sharing rows and columns of contingency tables. This study shows that the use of Lidwa Pusaka application is very effective in supporting the success of learning ḥadīth and among students. There are 75% of students who satisfied in learning ḥadīth using the application, 21% who quite satisfied, and 4% who did not satisfy.

Keywords: Lidwa Pusaka application; hadith; student; Hadith Department.

1 Introduction

There is a new development of ḥadīth or Muhammad's words collections in the early modern period. Since the twentieth century, ḥadīth scholars used some computational softwares and applications. These applications certainly can help researchers and common people in learning ḥadīth. Everyone who learn ḥadīth can more easier to search ḥadīth using the application [1].

It is different from the development of ḥadīth in the early period of Islam in seventh century. Muslims cannot get ḥadīth directly. It is no many Muslims who able to understand the ḥadīth.

Many scholars then compiled ḥadīth into several collections, such as *Ṣaḥīḥ al-Bukhārī*, *Ṣaḥīḥ Muslim*, *Sunan Abū Dāwūd*, *Sunan al-Tirmidhī*, *Sunan al-Nasā'ī*, *Muwatta' Mālik*, *Musnad Aḥmad*, *Sunan al-Dārimī*, and others [2].

Since the period of middle age of Islam, the ḥadīth knowledge have increased. It is a period when ḥadīth scholars can studied systematically and easier to search ḥadīth in some collections of ḥadīth. While, another ḥadīth scholars began to analyse and evaluate some ḥadīths in several collections [3].

However, the ḥadīth studies in classical period cannot be understood by students in modern period. The student of Islamic university cannot understand ḥadīth knowledge well. They do not have Arabic language skills. It is not easy to understand Arabic books of ḥadīth collectons.

This study will highlight the significance of computational program of ḥadīth application, such as Lidwa Pustaka. The application is very interesting. It is not only for common people, but also students at the Islamic university. Lidwa Pusaka is a Indonesian computational program of ḥadīth application which use 62,000 ḥadīths that taken from nine books of ḥadīth collections (*kutub al-tis'ah*). The application can be used to support the understanding of ḥadīth and ḥadīth knowledge [4].

The study focuses on the use of Lidwa Pusaka application in learning ḥadīth among students of Hadīth Departement at UIN Sunan Gunung Djati Bandung. I used list of questionts on the student satisfaction in learning ḥadīth using Lidwa Pusaka application.

2 Result and Discussion

Lidwa Pusaka is an abbreviation of *Lembaga Ilmu dan Da'wah serta Publikasi Sarana Keagamaan*, The Institute of Islamic Science, Da'wa and Publication of Religious Facilities. It is an institution that engaged in the development of computational program and application of ḥadīth. Lidwa Pusaka was created by Indonesian students who studied in the Middle East [5].

The ḥadīth application contains 62,000 ḥadīth that taken from nine books of ḥadīth collections (*kutub al-tis'ah*), such as *Ṣaḥīḥ al-Bukhārī*, *Ṣaḥīḥ Muslim*, *Sunan Abū Dāwud*, *Sunan al-Tirmidhī*, *Sunan al-Nasā'ī*, *Sunan Ibn Majah*, *Muwatta' Mālik*, *Musnad Aḥmad*, *Sunan al-Dārimī* [6].

There are some utilities of Lidwa Pusaka application that used by students in their learnings: 1) It can be accessed more easier using Laptop, PC, and android; 2) There is menu option to search ḥadīth; 3) The application already supported copy and paste menu of Arabic text and its translations into Indonesian; 4) It also displayed menu of type and font color that can be customized into user comfort; 5) It provides ḥadīth index based on certain theme; 6) Provides a menu to see Hadith's Hadith categorization degree, 7) The description of the narrators of hadith can be obtained easily, 8) Can add notes with user language, 9) Validation of books can be justified, because this software contains a complete source with, title, book name, page, juz, city published, publisher and year publication [4].

Lidwa Pusaka application can be used by both offline and online using the internet [7]. Following picture show the steps of Lidwa Pustaka application when used by offline:

- 1) Open the program of *Kitab 9 Imam*, the nine books of imam, that already installed:



Figure 1. Kitab 9 Iman

2) Use the search menu in order to search certain ḥadīth, the *rawi* or scholars who tale the ḥadīth, and book of ḥadīth collections which collected the ḥadīth. We can choose one of chapters of the collection of ḥadīth, such as the prayer, *zakat*, fasting etc. We can also use certain words relating to the list of *rawi* and its biography or index. You should put the cursor in the search field, then type the keyword that will be searched in Arabic or Indonesian language.



Figure 2. Search Menu Display

3) Following picture show the *rawi* names and their qualities in tale the ḥadīth:

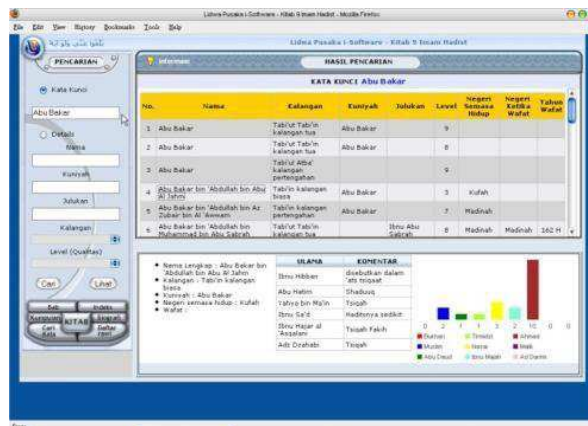


Figure 3. Rawi Names Display

4) We also can choose the menu of collections of ḥadīth in order to know the variation of quality of ḥadīth, such as *maqtu'*, *marfu'*, *mauquf*, *mu'allaq*, *munqathi*, *mursal*, etc:

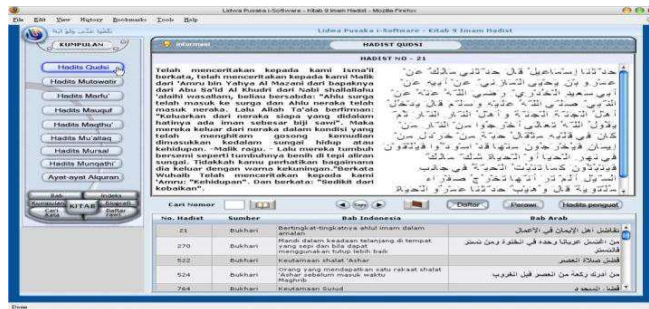


Figure 4. Collections Menu Display

5) Last step is copy the data of ḥadīth that can be pasted into the other application, such microsoft office word.

Another important parts of Lidwa Pusaka application is the menu of science of ḥadīth or *mustalah al-ḥadīth*. It is a menu that students can find discussions on the science of ḥadīth briefly [5]

The menu of science of ḥadīth in Lidwa Pusaka application can be used by students to learn the *mustalah al-ḥadīth*. It is an application that supports the learning of ḥadīth in college and university.

It is interesting that student used the Lidwa Pusaka application in their learnings at UIN Sunan Gunung Djati Bandung. The study focuses on student's satisfaction after used the Lidwa Pusaka in their learnings of ḥadīth. I distributed five questions to 32 students [6], [8]. They previously were given a task during first half semester to find certain ḥadīth from the nine books of ḥadīth at the library. They then was ordered to use Lidwa Pusaka application in second half semester. They should compare how their experiences when use the nine books of ḥadīth and the Lidwa Pusaka application.

Following list of step that ordered into student to search ḥadīth:

- 1) Determining the theme of Hadith Muamalah each one person;
- 2) Seeking Hadith conventionally by using Mu'jam Mufarras li alfadz al-Hadith;
- 3) Seeking the quality and quantity of Hadith by looking at Rawi Hadith from Rijal al-Hadith;
- 4) While digitally using the search for Hadith, which has been described previously;

After completion of the assignment, at the end of the course the researcher conducted a correspondence on the heirloom as below:

Lidwa (about attached) to 32 students. Then the results are reviewed from the correspondence analysis between software Lidwa Pusaka with satisfaction Student of fourth semester of Hadith Science Department at Faculty of Ushuluddin UIN SGD obtained contingency table:

Table 1. Contingency Table

Lidwa Pusaka Application	Student Satisfaction			
	Very Satisfied	Enough Satisfied	Not Satisfied	
Searching Hadith Particular Discussion	7	2	1	10
Musthalah Hadith	1	1	-	2
Explanation of Quantity-Quality of Hadith	6	2	-	8
Time Efficiency	5	-	-	5
Efficiency in Learning Application	5	2	-	7
Amount	24	7	1	32

The chi-square value describes the proximity of each variable. At a chi-square value a positive or negative mark corresponds to the inverse of the sign at the difference value [9]. A positive sign indicates a strong relationship and a negative sign indicates a weak relationship. The value of chi-square between software Lidwa Pusaka with satisfaction Students semester IV Hadith Science Departemen at Faculty Ushuluddin UIN Sunan Gunung Djati Bandung, namely:

Table 2. Chi-Square Result Table

Lidwa Pusaka Application	Student Satisfaction		
	Very Satisfied	Enough Satisfied	Not Satisfied
Searching of Specific Hadith	0,03	0,01	1,51
Discussion of Musthalah Hadith	0,16	0,64	0,62
Explanation of Quantity-Quality of Hadith	0	0,03	0,65
Time Efficiency of Using Application	0,41	1,93	0,15
Time Efficiency in Dictation of Hadith	0,41	1,93	0,15
Efficiency in Learning Application	4,06	0,14	0,21

Meanwhile, if presented by students who feel satisfied that is 75%, feel quite satisfied 21% and not satisfied 4% with software Lidwa Pusaka that help in the understanding Hadith and Science of Hadith.

3 Conclusion

Lidwa Pusaka application is very effective in supporting the learning hadith among students. There are 75% of students who satisfied in learning hadith using the application, 21% who quite satisfied, and 4% who did not satisfy. The application could helps student in understanding hadith. It can be considered that there is one student who did not satisfy for every seven students at the university.

References

- [1] C. T. Adhikara, "Analisis Sebaran Pemanfaatan Internet Blog/Weblog untuk Kategori Bisnis dan Ekonomi di Dunia Maya Indonesia," *ComTech Comput. Math. Eng. Appl.*, vol. 1, no. 2, pp. 1188–1196, Dec. 2010.
- [2] Idri, *Studi Hadis*. Jakarta: Kencana, 2010.
- [3] T. M. H. A. Shiddieqy, *Sejarah dan Pengantar Ilmu Hadis*. Semarang: PT. Pustaka Rizki Putra, 1999.
- [4] H. H. Batubara, "Pemanfaatan Ensiklopedi Hadis Kitab 9 Imam sebagai Media dan Sumber

Belajar Hadis,” *Muallimuna J. Madrasah Ibtidaiyah*, vol. 2, no. 2, pp. 63–74, 2017.

[5] Lidwa, “Profil Lidwa.” [Online]. Available: <http://www.lidwa.com/profil-lidwa/>. [Accessed: 29-Oct-2018].

[6] M. Greenacre, *Correspondence Analysis In Practice*. New York: Chapman & Hall/CRC, 2007.

[7] D. U. Fikriyyah, “Telaah Aplikasi Hadis (Lidwa Pusaka),” *J. Stud. Ilmu-Ilmu al-Qur’an dan Hadis*, vol. 17, no. 2, pp. 273–288, 2016.

[8] C. Jannah, “Analisis Korespondensi Untuk Mengetahui Alasan Mahasiswa Memilih Jurusan Di Fmipa Universitas Negeri Malang (Studi Kasus Mahasiswa Non Kependidikan FMIPA Universitas Negeri Malang),” Universitas Negeri Malang, 2013.

[9] M. J. F. Hair, *Multivariate Data Analysis*. New York: Pearson Prentice, 2010.